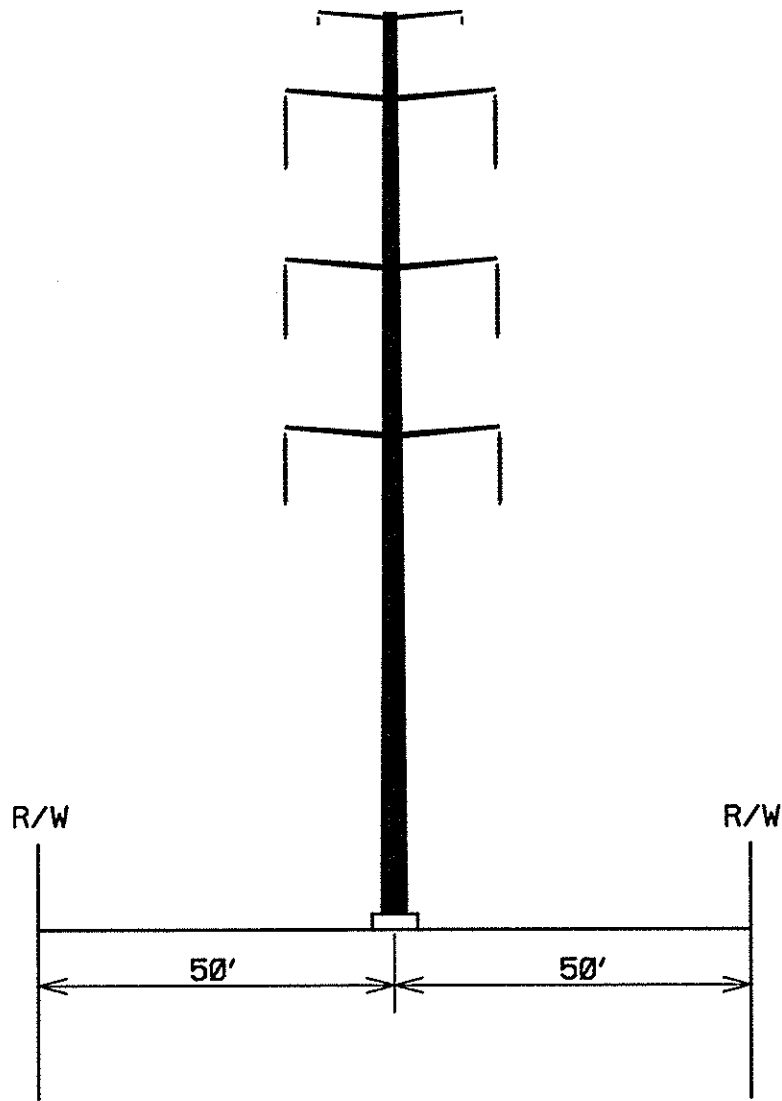


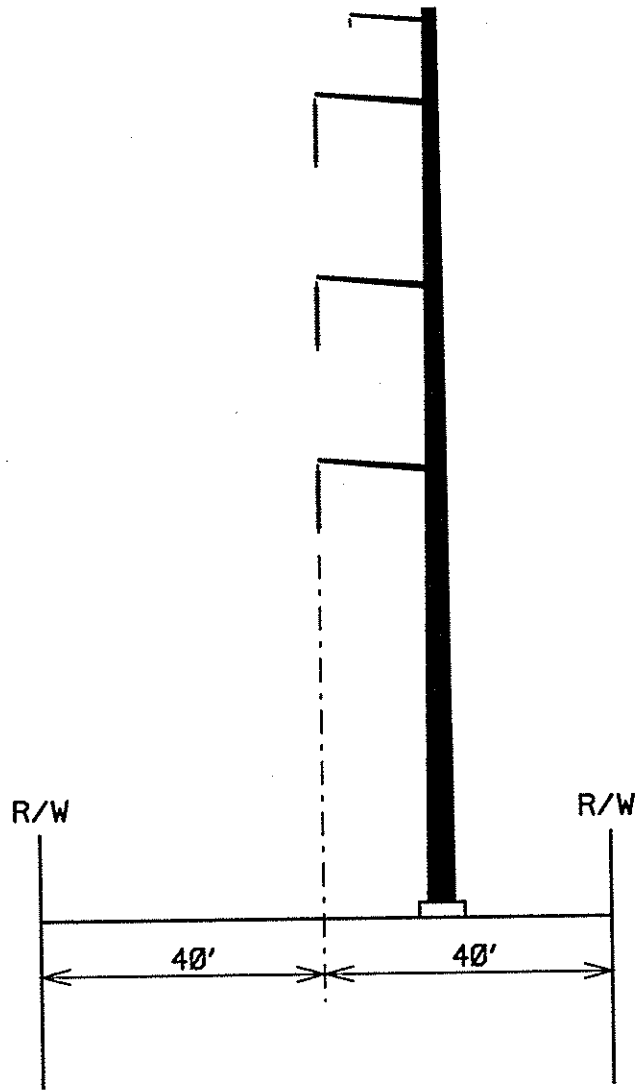
PLEASANT VIEW – HAMILTON 230kV TRANSMISSION LINE



PROPOSED RIGHT OF WAY

TYPE OF STRUCTURE :	DC STEEL SUS. W/ARMS
FOUNDATION :	CONCRETE
APPROX. AVERAGE HEIGHT :	120 FEET
WIDTH AT CROSSARM :	26 FEET
WIDTH AT BASE :	4 FEET
AVERAGE SPAN LENGTH :	700 FEET
CONDUCTOR TYPE :	2-636 ACSR (ALUMINUM)
RIGHT-OF-WAY WIDTH :	100 FEET
APPROX. LENGTH OF LINE :	VARIES

PLEASANT VIEW – HAMILTON 230kV TRANSMISSION LINE



PROPOSED RIGHT OF WAY

TYPE OF STRUCTURE :	SC STEEL SUS. W/ARMS
FOUNDATION :	CONCRETE
APPROX. AVERAGE HEIGHT :	120 FEET
WIDTH AT CROSSARM :	13 FEET
WIDTH AT BASE :	4 FEET
AVERAGE SPAN LENGTH :	700 FEET
CONDUCTOR TYPE :	2-636 ACSR (ALUMINUM)
RIGHT-OF-WAY WIDTH :	80 FEET
APPROX. LENGTH OF LINE :	VARIES